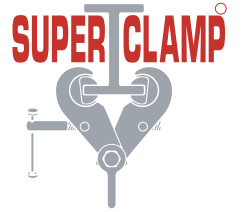


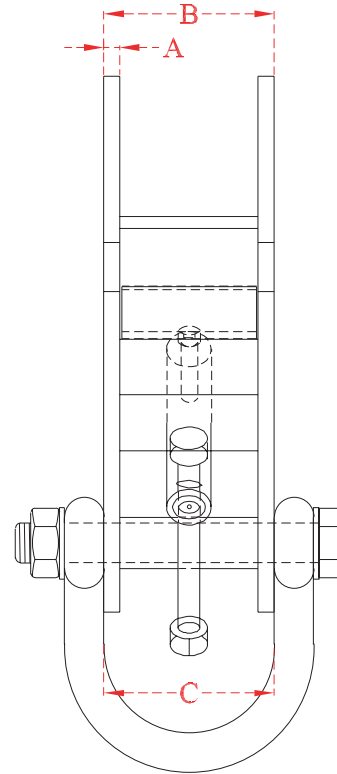
Worldwide Suppliers
of **Super Clamps**



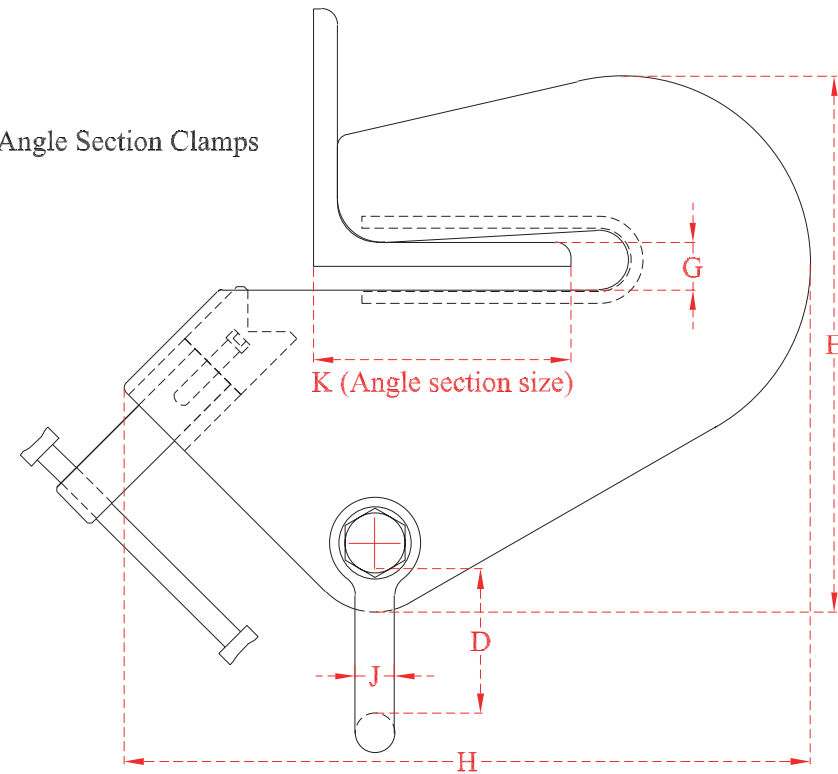
Adjustable SUPERCLAMP Angle Section Clamps



| | | Dimensions | | | | | | | | | | Weight |
|------|------------|------------|----|-----|-----|-----|----|-----|----|---------|--------|--------|
| | | A | B | C | D | E | G | H | J | K | | |
| AC 1 | WLL 508kg | 4 | 65 | 70 | 96 | 206 | 15 | 258 | 16 | 38-101 | 4.5kg | |
| AC 2 | WLL 1016kg | 6 | 69 | 70 | 96 | 206 | 15 | 258 | 16 | 38-101 | 5.5kg | |
| AC 3 | WLL 1524kg | 8 | 86 | 90 | 73 | 270 | 19 | 346 | 20 | 50-152 | 11kg | |
| AC 4 | WLL 3048kg | 10 | 90 | 102 | 101 | 343 | 25 | 449 | 20 | 101-203 | 21.5kg | |



(AC) Angle Section Clamps



Riley (Lifting Equipment) Ltd

Hope Building, Dockray Street
Colne, Lancashire BB8 9HT

Tel: +44 (0) 1282 867 177

Fax: +44 (0) 1282 863 698

Email: info@superclamp.co.uk

www.superclamp.co.uk